

KINDER KEEPER



FOCUS QUESTION:

WHAT DO PLANTS AND ANIMALS need TO STAY ALIVE?

BUZZWORD:

Environment

THE SITUATION:

You are a keeper who takes care of animals at the California Science Center.



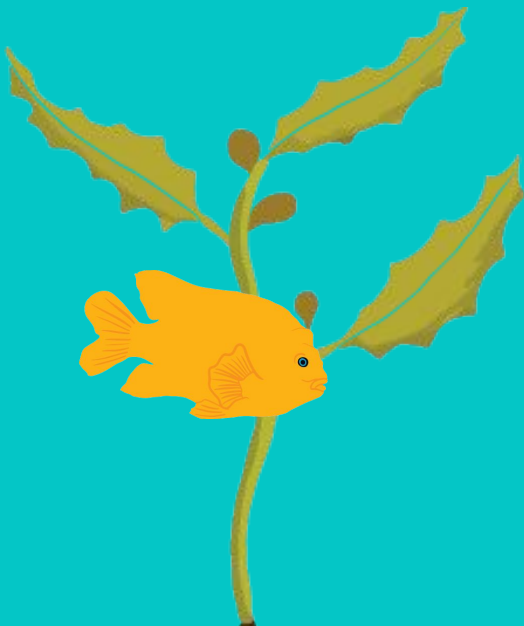
What do animals need to stay alive?



HYPOTHESIS:

Draw a picture of all the things animals need to stay alive.

Draw your answer in this text box, or on a separate sheet of paper (such as in a notebook).



MATERIALS:

- The “Kinder Keeper” game from your teacher

Something to draw with:

- Digital Device

OR

- Paper Pencil, marker, crayon, etc

Plants, animals, and humans all need similar things to stay alive.



EXPERIMENT!



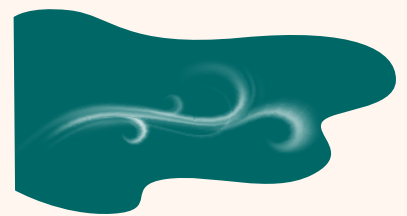
Spend a day as a keeper!

1. Play the “Kinder Keeper” game.
2. Follow the directions to learn what animals need to stay alive in their natural environment.
3. Choose what to feed the animals at the California Science Center.

WHAT'S GOING ON?



1. Circle the things all animals **need** to stay alive.



2. Think and share: Where do animals get what they need to stay alive?